



*Penang Port SDN BHD*

# **PELKON - III**

## **Operations User Manual**

# **CADO**

## **Operations**

**Version 1.0**



## Table of Contents

<b>1</b>	<b>CADO Booking Number</b>	<b>3</b>
1.1	Introduction	3
1.2	System Navigation	3
1.3	Overview of CADO Booking NO	4
1.3.1	Main screen- main areas	4
1.3.2	Main screen-detailed	6
1.4	Process steps	6
1.4.1	Steps for Selection of value from LOV	7
1.5	Description of fields	8
<b>2</b>	<b>CADO Container Nomination</b>	<b>10</b>
2.1	CADO Container Nomination	10
2.2	Introduction	10
2.3	CADO Container Nomination functional overview	10
2.4	System Navigation – CADO Container Nomination	10
2.5	Overview of CADO Container Nomination screen	11
2.5.1	Main Screen – Main Areas	11
2.5.2	Main Screen – Detailed Description	12
2.6	Manifest Entry – Steps	13
2.6.1	Nominating Containers to Booking No	13
2.6.2	Containers in CADO Container Nomination	14
2.7	Description of Fields	14
2.7.1	Main Screen: Selection Criteria Area:	14
<b>3</b>	<b>CADO Shift/Associate Booking</b>	<b>16</b>
3.1	Introduction	16
3.2	Change of SCN / Shift of Booking no	16
3.3	System Navigation – CADO Shift/Associate Booking	16
3.4	Overview of CADO Shift/Associate Booking screen	17
3.4.1	Main Screen – Main Areas	17
3.4.2	New SCN Lookup	18
3.5	Associate Booking No screen - Steps	20
3.5.1	Associate Booking No for Export Manifest Container	20
3.5.2	Main Screen – Detailed Description	21
3.6	Change of SCN - Steps	22
3.6.1	Change of SCN for Export Manifest Container which have Booking no's associated	22
3.6.2	Main Screen – Detailed Description	22
3.6.3	Description of Fields	23
3.6.4	Main Screen: Selection Criteria Area: Associate Booking no	23
3.6.5	Main Screen: Table	23
3.6.6	Main Screen: Selection Criteria Area: Change SCN	24
<b>4</b>	<b>CADO Booking Monitoring</b>	<b>26</b>
4.1	CADO Booking Monitoring	26
4.2	Introduction	26
4.3	CADO Booking Monitoring overview	26
4.4	System Navigation – CADO Booking Monitoring	26
4.5	Overview of CADO Booking Monitoring screen	27
4.5.1	Main Screen – Main Areas	27
4.5.2	Main Screen – Detailed Description	28
4.6	CADO Booking Monitoring – Steps	29
4.6.1	CADO Booking Monitoring	29
4.7	Description of Fields	30
4.7.1	Main Screen: Selection Criteria Area:	30

# 1 CADO Booking Number

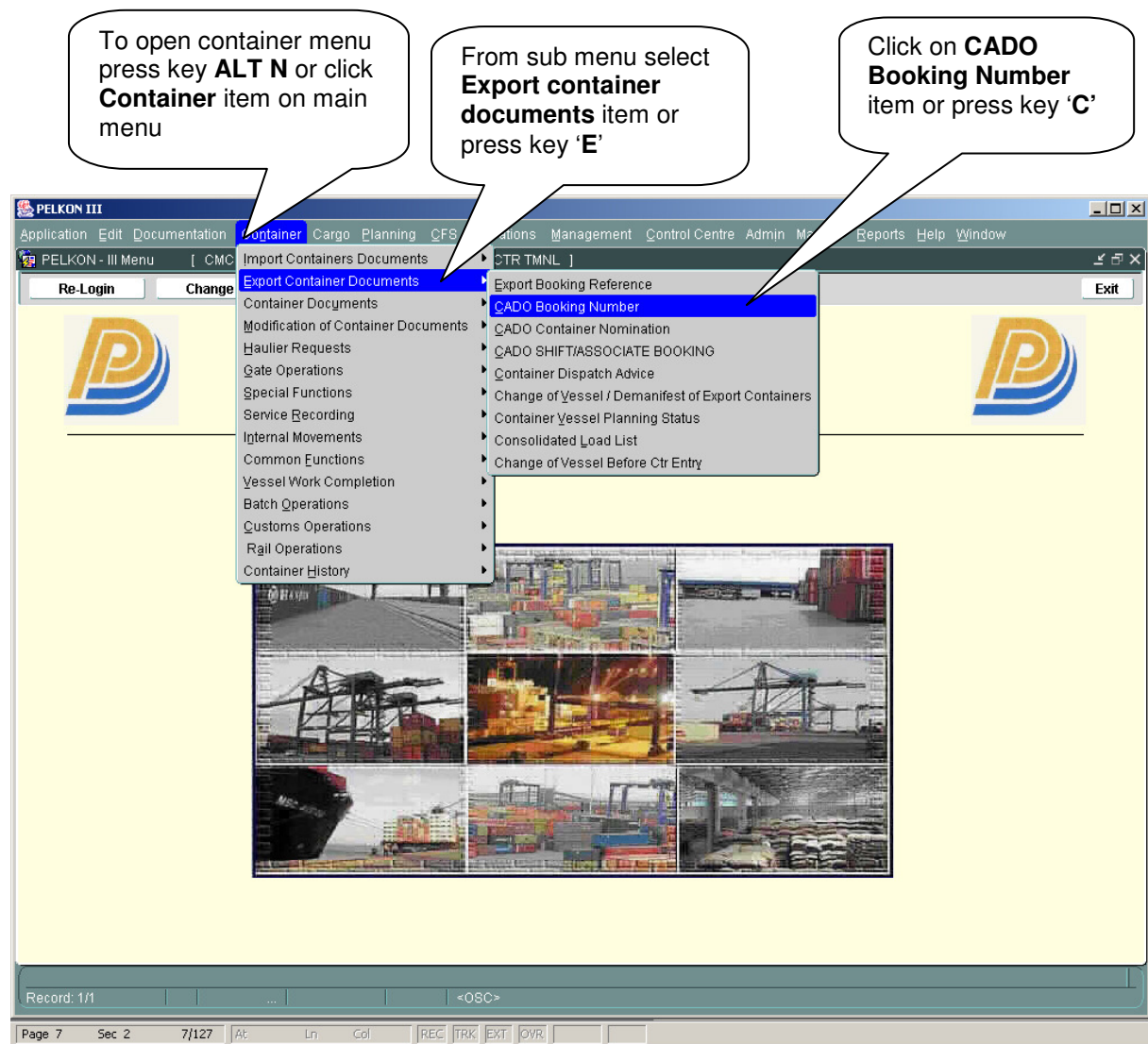
## 1.1 Introduction

This screen will be used by the Shipping Agent as well as Container Operator to enter the number of containers(count) to be exported by a vessel through Booking no. For every export container it is mandatory to record the booking no. Count can be modified after data has been saved.

## 1.2 System Navigation

This section demonstrates how to navigate up to CADO Booking Number screen. The navigation process to access CADO Booking Number is as follows.

1. Click on the MACH Logon icon
2. Logon screen appears
3. Log in with proper user id and password
4. Main menu screen appears
5. Click on Container from main menu bar.
6. Select Export Containers Documents from drop down menu.
7. Select CADO Booking Number from drop down menu.
8. **Navigation: - Container -> Export Containers Documents -> CADO Booking Number**



## 1.3 Overview of CADO Booking NO

### 1.3.1 Main screen- main areas

On selecting CADO booking No from the menu, the user is presented with the screen below. The main screen can be broken down into three areas:

- 1) Toolbar
- 2) Selection Criteria
- 3) Table

**1) Toolbar** has the buttons used to clear, delete, retrieve and save screen data

**2) Selection criteria** fields are used to retrieve data

**3) Table** has records to be entered/updated by user.

## 1.3.2 Main screen-detailed

The screenshot shows the main screen of the PELKON-III CADO Operations system. The interface includes a menu bar at the top with options like Application, Edit, Documentation, Container, Cargo, Planning, CFS, Operations, Management, Control Centre, Admin, and Master. Below the menu bar, there are several input fields and dropdown menus for data entry. Numbered callouts (1-14) point to specific fields with instructions:

- 1. Enter **SCN** or select from LOV
- 2. Enter **Bkng No**
- 3. Enter **Exporter/Shipper** (if any)
- 4. Enter **F or E Indicator**
- 5. Enter **Commodity Code**
- 7. Enter **POD**
- 7. Enter **FPD**
- 8. Enter **Inland Origin**
- 9. Enter **ISO Cd**
- 10. Enter **Weight**
- 11. Enter **Ctr Cnt**
- 12. Enter **Gred (if any)**
- 13. Enter **Depot Cd**
- 14. Enter **Depot Cnt**

The main data entry area contains a table with columns: ISO Cd, Ctr Size, Ctr Ht, Ctr Type, Rfr Flag, Max Set Temp, Min Set Temp, ACT Temp, OOG Flag, UN No, IMO Class, Proper Shipping Nm, Weight, Ctr Cnt, CDA Cnt, and Gred. Below this table is a section for Depot information with columns: Depot Cd, Depot Descr, Depot Cnt, and CDA Cnt. The bottom status bar shows 'Record: 1/1', 'Page 8', 'Sec 2', '8/127', and various control buttons like REC, TRK, EXT, OVR, and a red X button.

## 1.4 Process steps

- 1) Enter value for the field **SCN** manually if data known. Else select it from LOV provided.
- 2) Enter value for the field **Booking no** or select correct one from LOV.
- 3) Enter value for the field **Exporter/Shipper**,
- 4) **Shipping line** is automatically prompted by the System based on login ID.
- 5) Enter value for the field **F/E Ind** or select the value from LOV.

- 6) Enter value for the field **Cmdt Cd** or select the value from LOV.
- 7) Enter value for the field **POD** or select the value from LOV.
- 8) Enter value for the field **FPD** or select the value from LOV.
- 9) Enter value for the field **Inland Origin** or select the value from LOV.
- 10) Enter/select ISO code in the detail panel.
- 11) If the container to be manifested is of reefer category then select **Rfr flag** and set the **Max temp** , **Min temp** and **Actual Temp**.
- 12) If the container is for Hazardous goods then Enter the **UN NO** and **IMO Class**.
- 13) If the container is OOG type. Then select **OOG Flg**.
- 14) In the Depot details block need to enter the **Depot Cds** and **Depot Count**.
- 15) Click on **save** button to save the booking details.

#### 1.4.1 Steps for Selection of value from LOV

- 1) Press the key F9 or click on special button, which has down arrow symbol besides SCN textbox. A new window will be open. Then follow step 2 or step 3
- 2) Double Click on value to populate the text field.
- 3) Enter value you want to search in the find text box and click "Find" button. Select the appropriate value and press "OK" button.

List of Voyages

Find 06%

SCN	Vessel Name	Eta Dtm	Etd_Dtm	Dsch Voy No	Ld Voy No
065050	INV VESS 241	01.06.2006 00:00	03.06.2006 00:00		
065001	SCENARIO 1	02.05.2006 16:00	05.05.2006 00:00		
065055	EDI	02.06.2006 10:00	02.06.2006 12:00	D855	LD55
065054	INV VESS 241	03.06.2006 00:10	05.06.2006 00:00	D82901	LD2901
065059	EDI	03.06.2006 13:00	03.06.2006 13:30	D59	L59
065003	PPSB VSL	05.05.2006 00:00	07.05.2006 00:00		
066003	INVOICE 3	05.06.2006 00:00	05.06.2006 01:00		
066002	INVOICE 2	05.06.2006 00:01	05.06.2006 12:00		
065006	SCEN2 LONG NAME	07.05.2006 10:00	06.05.2006 00:00		
065009	DISCHARGE VESSEL ON 06052...	08.05.2006 00:00	10.05.2006 00:00		
065007	SCEN2 LONG NAME	09.05.2006 00:00	06.05.2006 12:01		
065012	PPPP	09.05.2006 00:00	11.05.2006 00:00		
065005	SCENARIO 1	09.05.2006 05:00	15.05.2006 00:00		
065013	PPPP	10.05.2006 00:00	11.05.2006 00:00	12345	
065014	TESTING VESSEL	10.05.2006 00:00	12.05.2006 00:00		
065056	TESTING	10.06.2006 00:00	15.06.2006 00:00		
065016	SCEN2 LONG NAME	11.05.2006 00:00	12.05.2006 00:00	D01	L01

Find OK Cancel

## 1.5 Description of fields

CADO Booking number screen has the following fields. Mandatory fields are represented separately using shaded boxes.

- **SCN**

User to enter SCN or has to select one from the drop down list.

This is 7-digit voyage call number that is generated by the system for every voyage.

- **Vessel Name**

When user selects SCN, the system displays the vessel name associated with the SCN in this field. It is a display only field.

- **Booking NO**

Booking No field to be entered if a new booking No to be generated. If the Changes to be made in the existing Booking no then select from LOV.

- **Exporter/Shipper**

It represents Exporter or Shipper for which Booking no to be generated and need to select from LOV.

- **Shipping Line**

Line code represents the Vessel agent for the SCN.

- **FPD**

FPD represents the Final Port of Discharge.

- **POD**

- POD represents Port of Discharge.

- **FE Ind**

This container attribute specifies whether container is full or empty.

- **Cmdt CD**

It represents Commodity in container.

- **Inland Origin**

Origin is the inland location of the container before entering the port.



- **ISO CD**

It represents ISO cd of container.

- **Ctr Size**

It represents container size.

- **Ctr Height**

It represents container height.

- **Ctr Type**

It represents type of container. It can be Reefer, Hazardous or OOG.

- **Ctr Cnt**

It represents the count of container that would be manifested for entered SCN with the mentioned attributes.

- **Rfr flag**

When the entered container type is reefer container that requires connection for maintaining temperature this flag is selected.

- **CDA count**

Container dispatch advice count represents the number of containers that are already manifested for SCN in CDA screen satisfying the specified attribute values.

- **Depot CD**

It represents the destination where the container is to be dropped at.

- **Depot Cnt**

It represents the Depot cnt for the specific ISO Code.

## 2 CADO Container Nomination

### 2.1 CADO Container Nomination

### 2.2 Introduction

This screen is used by the Deport Operator to nominate the container to the Booking number which is already for specific SCN manifested. Booking Number is mandatory to nominate the export containers.

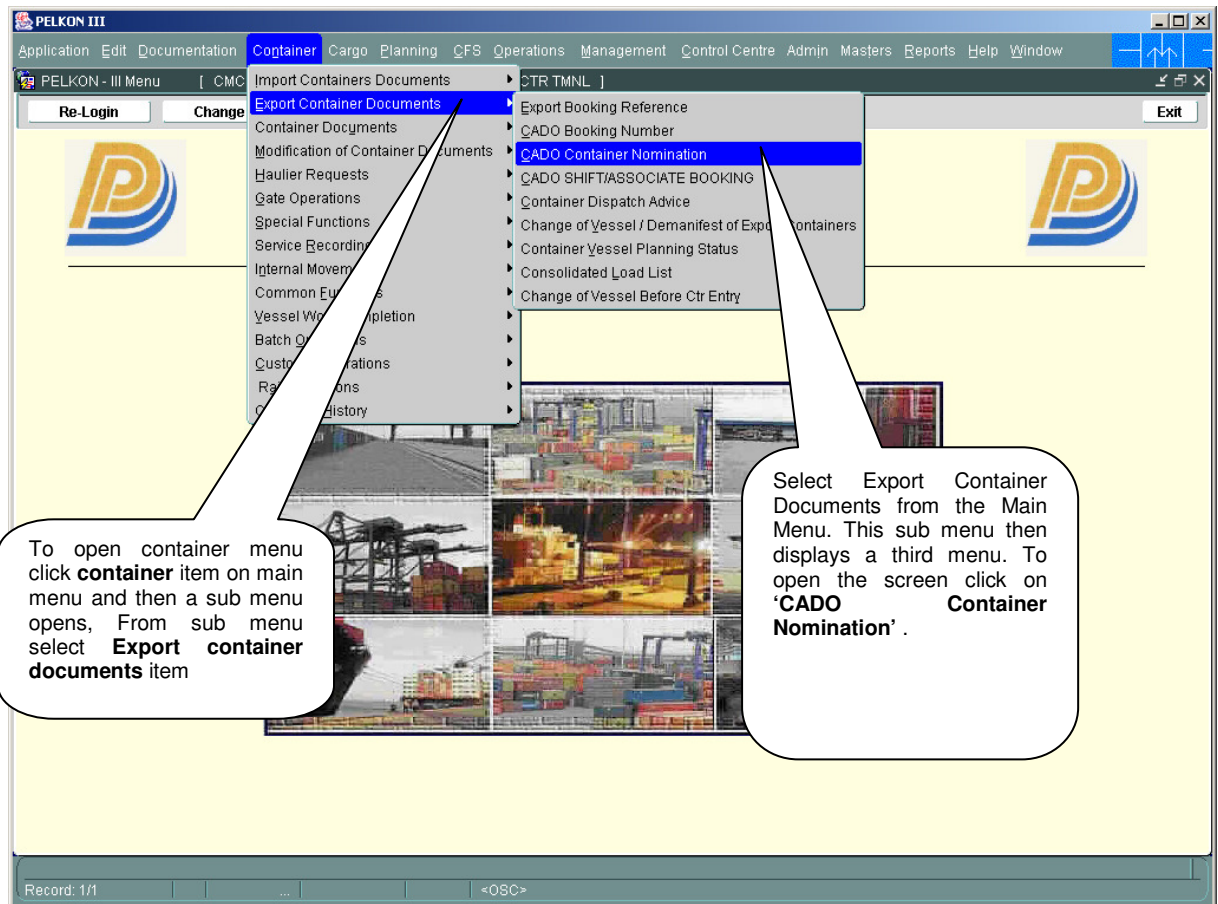
### 2.3 CADO Container Nomination functional overview

1. The CADO Container Nomination screen is used to nominate the export containers to the manifested Booking number for the specific SCN.
2. Depot Cd for the specific Booking No are shown in the LOV and only these Depot cd can be used to nominate the container.
3. Container number is entered to nominate to the Booking no.

### 2.4 System Navigation – CADO Container Nomination

This section demonstrates how to navigate up to CADO Container Nomination screen. The navigation process to access CADO Container Nomination is as follows.

1. Click on the MACH Logon icon
2. Logon screen appears
3. Log in with proper user id and password
4. Main menu screen appears
5. Click on Container from main menu bar.
6. Select Export Containers Documents from drop down menu.
7. Select CADO Container Nomination from drop down menu.
8. **Navigation: - Container -> Export Containers Documents -> CADO Container Nomination**



## 2.5 Overview of CADO Container Nomination screen

### 2.5.1 Main Screen – Main Areas

On selecting CADO Container Nomination from the menu, the user is presented with the screen below. The main screen can be broken down into three areas:

- 1) Toolbar
- 2) Selection Criteria
- 3) Table

**1) The Toolbar** holds buttons which can be used to perform actions on a record or the screen.

**2) The Selection Criteria** area of the screen is used to enter details (filter criteria) about what is to be viewed prior to the retrieving information about a Booking No. (i.e. for a specific Booking no, show all containers with Depot cd)

**3) The Table** is used to display all manifested containers, which have been entered and add new containers

## 2.5.2 Main Screen – Detailed Description

On selecting CADO Container Nomination from the Menu and Retrieving details for a Booking no, the user is presented with a screen similar to the one below:

To **retrieve** container based on Booking No

To **delete** any specific container

Depot cd is showing based on login ID automatically by the system

Select **Booking no** from Lov.

Enter **Ctr No** and press "Arrow Down" button. System will automatically save the container

The screenshot shows the 'Cado Container Nomination' window. At the top, there are buttons for 'Clear', 'Retrieve', and 'Delete'. Below these are input fields for 'Booking No' (NEELTEST), 'SCN' (091001), 'B.MCL PERKASA', and 'ETA' (12.02.2009 23:00). There are also fields for 'Ctr Opr' (WHAI), 'WAN HAI LINES (M) SDN BHD', 'Depot Cd' (BB), and 'DEPT B DESCR'. Further down, there are fields for 'POD' (THKAN), 'FF' (PFAAA), 'F/E' (F), 'Bkng Remarks' (KJ), 'Depot Cnt' (3), 'ISO Cd' (20G0), 'Sz' (20), 'Ctr Ht' (80), 'Ctr Type' (GP), 'Bkng Cnt' (5), 'Gred' (A), 'CDA Cnt' (3), and 'Remarks' (NJBB). Below the form is a table with columns: Ctr No, Base Sts, Iso Cd, Ctr Size, Ctr Ht, Ctr Type, and Fe Ind. The table contains three rows of test data. Callouts provide instructions: 'To retrieve container based on Booking No' points to the 'Retrieve' button; 'To delete any specific container' points to the 'Delete' button; 'Depot cd is showing based on login ID automatically by the system' points to the 'Depot Cd' field; 'Select Booking no from Lov.' points to the 'Booking No' field; and 'Enter Ctr No and press "Arrow Down" button. System will automatically save the container' points to the 'Ctr No' field.

Ctr No	Base Sts	Iso Cd	Ctr Size	Ctr Ht	Ctr Type	Fe Ind
TEST1111111	E	20G0	20	80	GP	F
TEST1111112	E	20G0	20	80	GP	F
TEST1111113	E	20G0	20	80	GP	F

## 2.6 Manifest Entry – Steps

### 2.6.1 Nominating Containers to Booking No

1. Enter "**Booking No**"/Select from the Booking No LOV. Use the lookup to search for the correct Booking No. Lookups are invoked by pressing F9 key on respective field. Lookup shows all Booking No's details with respect to the user logging in.
2. The Depot Codes which are manifested to the specific Booking no are shown in the Depot cd LOV.
3. Enter the container number in "**Ctr No**" field in the details part. Entering container number is mandatory. This is the container that is manifested against selected Booking No and depot Cd for export.
4. System will automatically put base status as 'E', i.e. Export.
5. System will automatically put Full/Empty as 'F' or 'E' depending on the Booking no details.
6. System will automatically put ISO code for container.
7. System will automatically put ctr sz, ctr ht and ctr type.

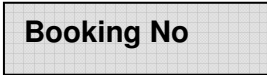

## 2.6.2 Containers in CADO Container Nomination

1. Enter Booking No in "**Booking No**" field. User can select Booking No by entering Booking No in this field. Alternate way to select Booking No is to use lookup. Lookups are invoked by pressing F9 key on respective field. Lookup shows all Booking no's only with respect to the user logged in and select the depot cd from the LOV.
2. Booking no field is mandatory for retrieving containers which are nominated. After selecting "**Retrieve**" option, system will retrieve all container information that are already manifested to Booking number.

## 2.7 Description of Fields

The following are the description of each field on the screen. The fields that have been marked with Shaded box are mandatory fields that must be populated for the user to proceed.

### 2.7.1 Main Screen: Selection Criteria Area:

-   
User to enter Booking no or has to select one from the drop down list.
- **SCN**  
When user selects Booking no, the system displays the SCN associated with the Booking no in this field. It is a display only field.
- **Vessel Name**  
When user selects Booking no, the system displays the vessel name associated with the SCN in this field. It is a display only field.
- **ETA**  
ETA represents the Expected Time of Arrival of the SCN.
- **Ctr Opr Cd**  
Container operator represents the container owner. This field is displayed when the user enters the booking no.
- **Ctr Opr Name**  
This is name of the container operator (owner). It is a display only field.
- **FE Ind**  
Indicates Full/Empty status of the container. This is also display only field.
-   
This filtering criteria is used to display the Depot Code which are manifested for the specific Booking no.

- **POD**

Port of discharge.

- **FPD**

Final Port of discharge.

- **Depot cnt**

Shows the Number of Depot's for the specific Booking no and depot code.

- **Bkng cnt**

Shows the maximum Number of Containers can be nominated for the specific Booking no and depot cd.

- **CDA cnt**

Container dispatch advice count represents the number of containers that are already manifested for SCN in CDA screen satisfying the specified attribute values.

**Detail table:-**

- **Container no**

This field is used for entering a container number.

- **Base Sts**

This field displays Base status of the Container.

- **FE Ind**

This indicates whether container is full or empty.

- **ISO Code**

ISO code will be displayed for the entered container.

- **Ctr Size**

This field displays Container size.

- **Ctr Ht**

This field displays Container Height.

- **Ctr Type**

This field displays Container type.

### 3 CADO Shift/Associate Booking

#### 3.1 Introduction

It is possible sometimes that Shipping Agent/Container Operator may need to change SCN for the specific Booking no (or) shift of booking no from one SCN to another.

- a. Change of SCN screen is for Shifting the booking from one SCN to the other SCN, Provided the containers have already been shifted to New SCN through Change of Vessel/Demanifest of Export Containers.
- b. Shift of Booking no screen shifts the containers from one booking to another, provided the attributes like iso code, ctr type, size and height are matches.

#### 3.2 Special Notes of Change of SCN / Shift of Booking no

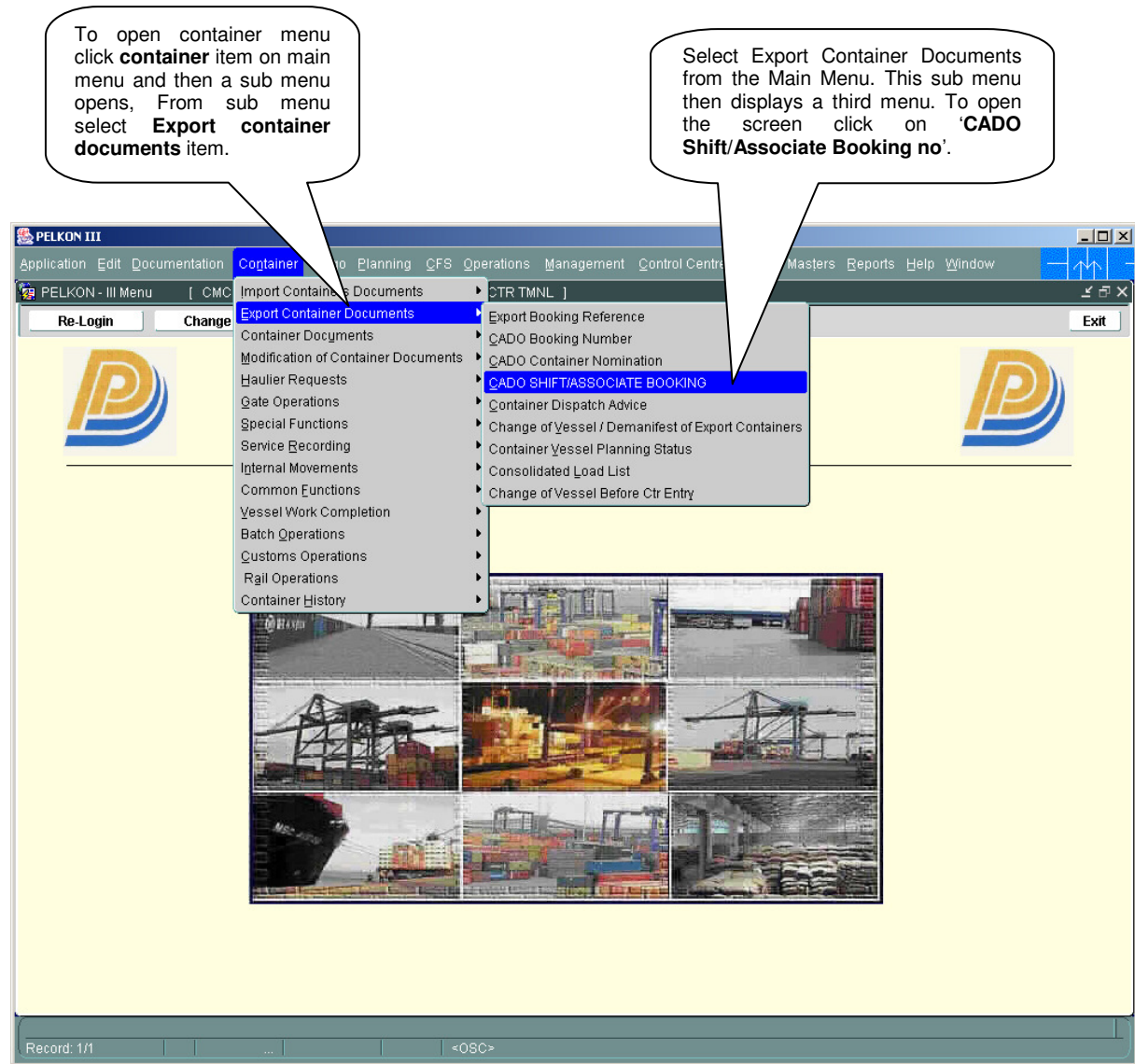
1. Containers that are not in port can undergo change of vessel operations.
2. Containers for which DE has been filed cannot be marked for change of vessel.
3. The date time stamp and the user who changed the vessel is logged.

#### 3.3 System Navigation – CADO Shift/Associate Booking

This section demonstrates how to navigate up to **CADO Shift/Associate Booking** screen. The navigation process to access screen is as follows.

1. Click on the MACH Logon icon
2. Logon screen appears
3. Log in with proper user id and password
4. Main menu screen appears
5. Click on Container from main menu bar.
6. Select Export Containers Documents from drop down menu.
7. Select CADO Shift/Associate Booking from drop down menu.
8. **Navigation: - Container -> Export Containers Documents -> CADO Shift/Associate Booking**



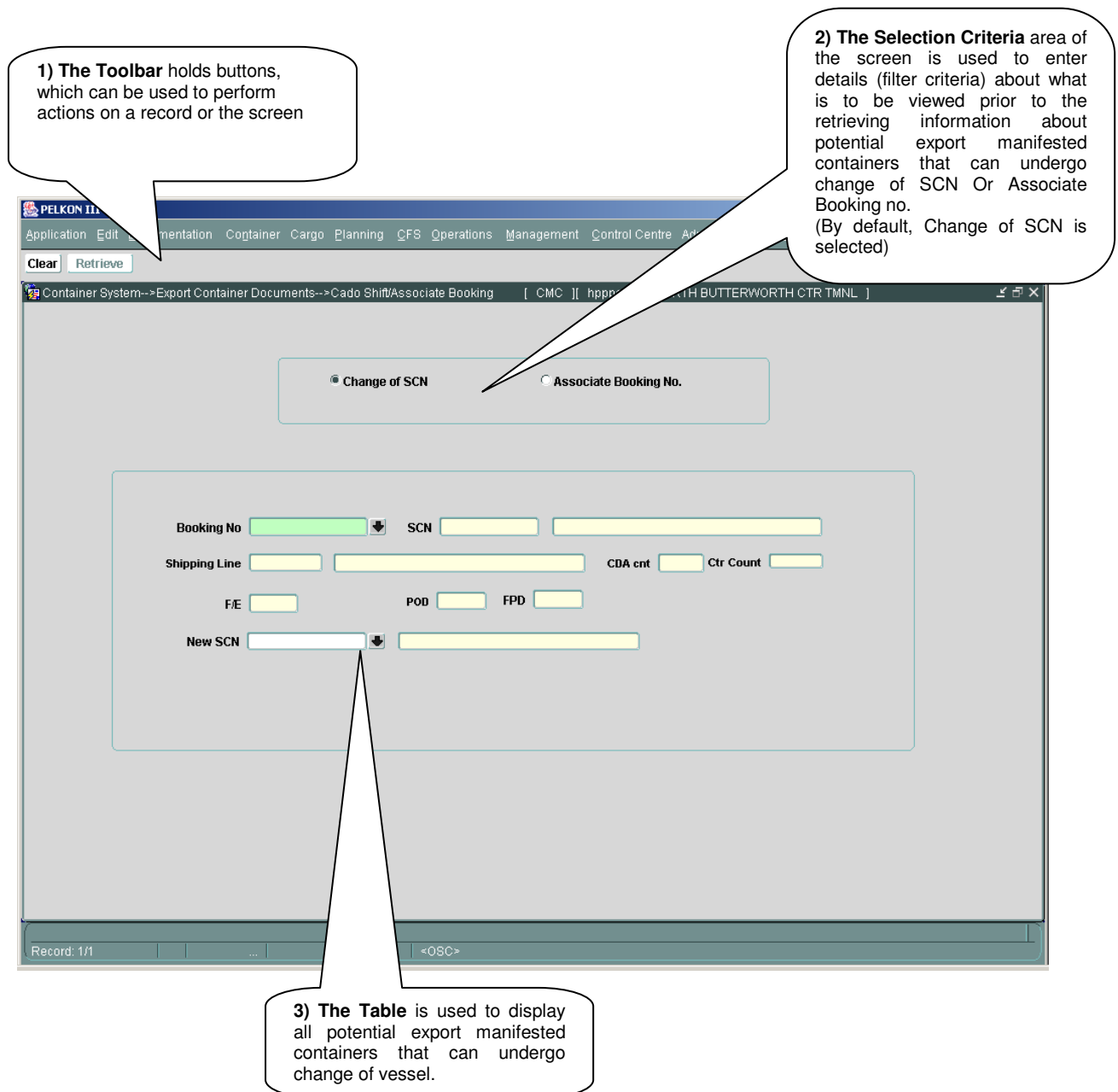


### 3.4 Overview of CADO Shift/Associate Booking screen

#### 3.4.1 Main Screen – Main Areas

On selecting CADO Shift/Associate booking screen from the menu, the user is presented with the screen below. The main screen can be broken down into three areas:

1. Toolbar
2. Selection Criteria
3. Table



### 3.4.2 New SCN Lookup

New SCN field in the main screen by pressing the F9 key or by clicking the LOV button, system will bring up the "List of Vessel" or SCN Lookup screen similar to pop-up shown below.

This screen assists in locating the correct voyage. All voyages in the PELKON III system are listed.

On selection of SCN Lookup, system presents user with following lookup window

Entering characters before or after the % sign will allow a search to be constructed. Each additional letter reduces the number of entries displayed. If letters are entered before % sign, then lookup entries are filtered on 1<sup>st</sup> column.

Find 0%

SCN	Vessel Name	Eta Dttm	Etd_Dttm	Dsch
065050	INV VESS 241	01.06.2006 00:00	03.06.2006 00:00	
065001	SCENARIO 1	02.05.2006 16:00	05.05.2006 00:00	
065003	PPSB VSL	05.05.2006 00:00	07.05.2006 00:00	
065002	SCENARIO 1	05.05.2006 00:00	10.05.2006 00:00	
065004	SCENARIO 1	06.05.2006 00:00	04.05.2006 20:50	
065011	LOAD VESSEL FOR TEST	06.05.2006 09:00	07.05.2006 00:00	
065010	SCEN2 LONG NAME	07.05.2006 00:00	08.05.2006 00:00	
065006	SCEN2 LONG NAME	07.05.2006 10:00	06.05.2006 00:00	
065015	EDI	07.05.2006 19:00	10.05.2006 00:00	12
065009	DISCHARGE VESSEL ON 06052...	08.05.2006 00:00	10.05.2006 00:00	
065007	SCEN2 LONG NAME	09.05.2006 00:00	06.05.2006 12:01	
065005	SCENARIO 1	09.05.2006 05:00	15.05.2006 00:00	

Find OK Cancel

Expected Time of Arrival for voyage

Expected Time of departure for vessel

### 3.5 Associate Booking No screen - Steps

#### 3.5.1 Associate Booking No for Export Manifest Container

1. If the SCN is known, enter in "**SCN**" field. Otherwise, use the lookup to search for the correct SCN. Lookups are invoked by pressing F9 key on respective field. Lookup shows all vessels with SCN/Vessel Name/ETA/ETD details. User can select any one SCN. System retrieves "**Vessel Name**".
2. If the Line cd is known, enter in "**Line cd**" field. Otherwise, use the lookup to search for the correct Line cd. Lookups are invoked by pressing F9 key on respective field.
3. If the ISO CD is known, enter in "**ISO CD**" field. Otherwise, use the lookup to search for the correct ISO CD. Lookups are invoked by pressing F9 key on respective field.
4. If the Booking no is known, enter in "**Booking no**" field. Otherwise, use the lookup to search for the correct Booking no. Lookups are invoked by pressing F9 key on respective field.
5. Press "**Retrieve**" button, system will retrieve export manifest containers that are in port, based on filtering criteria.
6. Select container that are to undergo change and provide New Booking no and Depot code.
7. Press "**Save**". Base vessel for selected container will change to Associate Booking no in "**New Booking no**".

### 3.5.2 Main Screen – Detailed Description

On selecting “CADO Shift/Associate Booking” screen from the menu and retrieving details for a previously entered voyage, the user is presented with a screen similar to the one below:

**Selection Criteria**

☐ Change of SCN ☒ Associate Booking No.

**Query Parameters**

SCN: 091001 B.MCL PERKASA Line Cd: [ ] [ ]

Booking No: [ ] ISO Cd: [ ] Base Sts: [ ] FE Ind: [ ] Container No: [ ]

Ctr No	Booking No	Line Cd	Iso Cd	Ctr Type	Ctr Sz	Ctr Ht	Base Sts	Fe Ind	New Booking No	Depot cd
<input type="checkbox"/> .EXPT0000001		AJ	22G0	GP	20	86	E	F		
<input type="checkbox"/> .EXPT0000002		AJ	22G0	GP	20	86	E	F		
<input type="checkbox"/> .EXPT0000003		AJ	22G0	GP	20	86	E	F		
<input type="checkbox"/> .EXPT0202001		AJ	20G0	GP	20	80	E	F		
<input type="checkbox"/> .NRCT0902081		WHAI	20G0	GP	20	80	E	F		
<input type="checkbox"/> .NRCT0902082		WHAI	22G0	GP	20	86	E	F		
<input type="checkbox"/> .NRCT0902083		WHAI	20G0	GP	20	80	E	F		
<input type="checkbox"/> .RLDY0202001		AJ	20G0	GP	20	80	E	F		
<input type="checkbox"/> .TEST0302001		WHAI	22R0	RF	20	86	E	F		
<input type="checkbox"/> .TEST0302002		WHAI	22R0	RF	20	86	E	F		

Check box needs to be selected when the user wants to change the booking no to new booking no.

New Booking no to be selected from LOV for the specific container.

Depot cd need to be selected from LOV.

### 3.6 Change of SCN - Steps

#### 3.6.1 Change of SCN for Export Manifest Container which have Booking no's associated.

1. If the Booking no is known, enter in "Booking no" field. Otherwise, use the lookup to search for the correct Booking No. Lookups are invoked by pressing F9 key on respective field.
2. If the SCN is known, enter in "**NEW SCN**" field. Otherwise use the lookup to search for the correct SCN. Lookups are invoked by pressing F9 key on respective field. Lookup shows all vessels with SCN/Vessel Name/ETA/ETD details. User can select any one SCN. System retrieves "**Vessel Name**".
3. Press "**Save**". Base vessel for selected Booking no will change to vessel specified in "**NEW SCN**".

#### 3.6.2 Main Screen – Detailed Description

**PELKON III**

Application Edit Documentation Container Cargo Planning CFS Operations Management Control Centre Admin Masters Reports Help Window

Clear Retrieve Save Exit

Container System-->Export Container Documents-->Cado Shift/Associate Booking [ CMC ] [ hpppsb ] [ NORTH BUTTERWORTH CTR TMNL ]

☒ Change of SCN ☐ Associate Booking No.

Booking No: NEELTEST SCN: 091001 B.MCL PERKASA

Shipping Line: WHAI WAN HAI LINES (M) SDN BHD CDA ent: 5 Ctr Count: 9

F/E: F POD: THKAN FPD: PFAAA

New SCN:

OSC

Select the radio button to change the SCN for the specific booking no.

If Booking no is known then enter or need to be selected from LOV.

If the new SCN is known then enter or select from the LOV.

### 3.6.3 Description of Fields

The following are the description of each field on each screen or area of screen. The fields that have been marked with Shaded box are mandatory fields that must be populated for the user to proceed.

#### 3.6.4 Main Screen: Selection Criteria Area: Associate Booking no

- **SCN**

User to enter SCN or has to select one from the drop down list.

- **Vessel Name**

When user selects SCN, the system displays the vessel name associated with the SCN in this field. It is a display field.

- **Line Cd**

User has to enter Line cd or has to select one from the drop down list.

- **Booking no**

User has to enter Booking no or has to select one from the drop down list.

- **ISO cd**

This is an optional filtering criterion. ISO cd represents the container attributes. Selecting this field, populates Iso cd in "**ISO cd**"

- **Base sts**

This is an optional filtering criterion. Base sts represents the container attributes. Selecting this field, populates base sts in "**Base sts**"

- **Container No**

Enter container number in this field to retrieve the specific container details.

- **FE ind**

This displays the Full/Empty indicator for the container. This indicates whether container is full or empty.

#### 3.6.5 Main Screen: Table

Container details of Associate Booring no are populated in this area.

- **Container No**

The container number populated in this field shall undergo change of base vessel if 'Y/N Ind' is checked.

- **Base St**

This field displays the base status of container.

- **FE ind**

This displays the Full/Empty indicator for the container. This indicates whether container is full or empty.

- **Line Cd**

Line cd represents the owner of the container.

- **ISO Cd**

Display the ISO code of the container.

- **Ctr Sz**

It represents the size of the container.

- **Ctr Ht**

It represents the height of the container.

- **Ctr Type**

It represents the type of the container.

- **New Booking no**

The user can select the new Booking no from LOV to which the user wants to change the booking no.

- **Depot cd**

It represents the destination where the container is to be dropped at.

### 3.6.6 Main Screen: Selection Criteria Area: Change SCN

- **Booking No**

User to enter Booking no or has to select one from the drop down list. To which the user wants to change the SCN for that Booking.

- **SCN**

When user selects Booking no , the system displays the SCN associated with the Booking no in this field. It is a display field.

- **Vessel Name**

When user selects SCN, the system displays the vessel name associated with the SCN in this field. It is a display field.



- **New SCN**

User has to enter SCN or has to select one from the drop down list.

After change of base vessel is completed, selected containers will be manifested to this voyage.

- **Vessel Name**

When user selects SCN, the system displays the vessel name associated with the SCN in this field. It is a display field.

- **Shipping line**

This displays the Shipping line for that SCN.

- **Ctr Count**

This displays the no of containers for that Booking no.

- **FE ind**

This displays the Full/Empty indicator for the container. This indicates whether container is full or empty.

- **POD**

Port of discharge.

- **FPD**

Final Port of discharge.

## 4 CADO Booking Monitoring

### 4.1 CADO Booking Monitoring

### 4.2 Introduction

This function is used to monitor all the Bookings for that specific SCN. After the Booking numbers retrieved in Details panel, user can double click on each Booking no to view its container details.

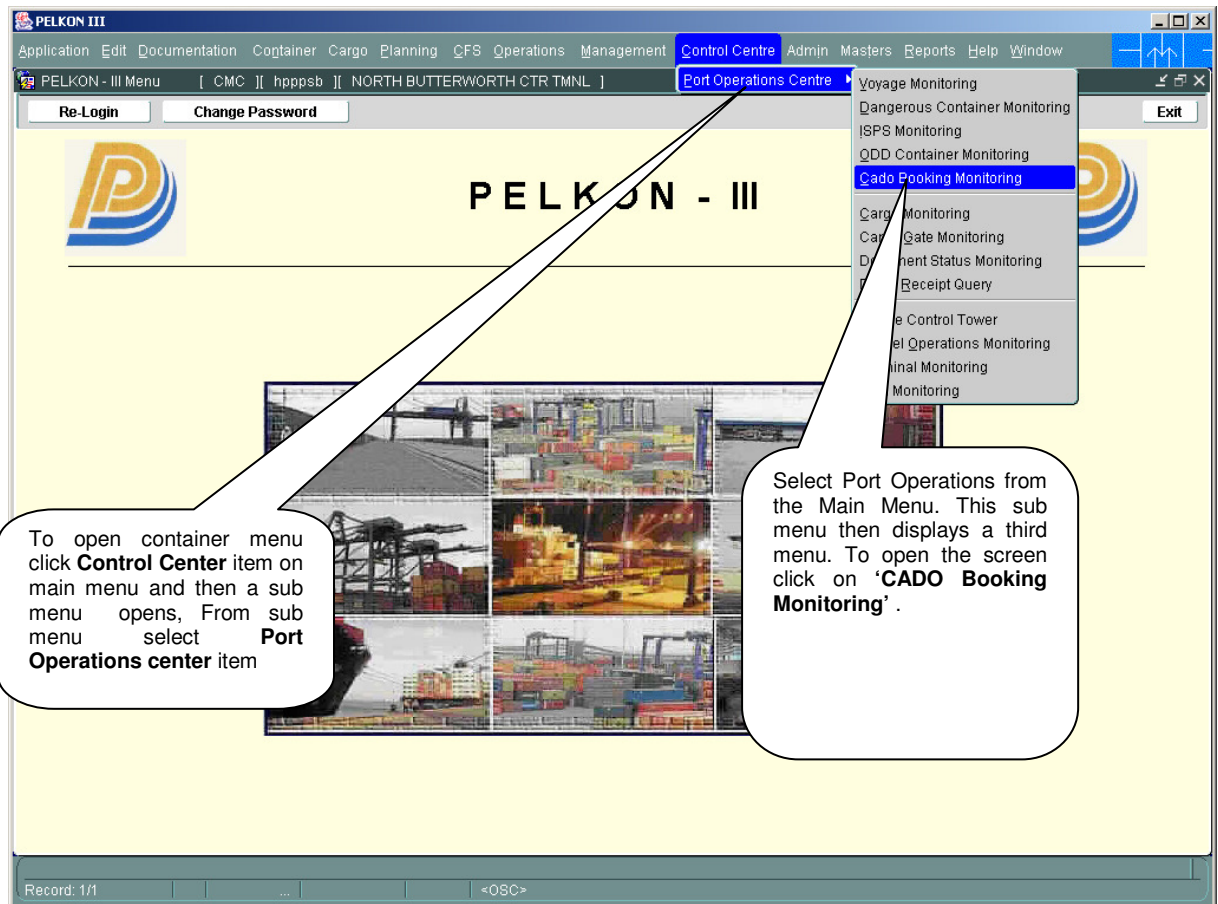
### 4.3 CADO Booking Monitoring overview

The CADO Monitoring screen is used to monitor the bookings of the specific SCN.

### 4.4 System Navigation – CADO Booking Monitoring

This section demonstrates how to navigate up to CADO Booking Monitoring screen. The navigation process to access CADO Booking Monitoring is as follows.

9. Click on the MACH Logon icon
10. Logon screen appears
11. Log in with proper user id and password
12. Main menu screen appears
13. Click on Control Center from main menu bar.
14. Select Port Operations from drop down menu.
15. Select CADO Booking Monitoring from drop down menu.
16. **Navigation: - Control Center -> Port Operations -> CADO Booking Monitoring**

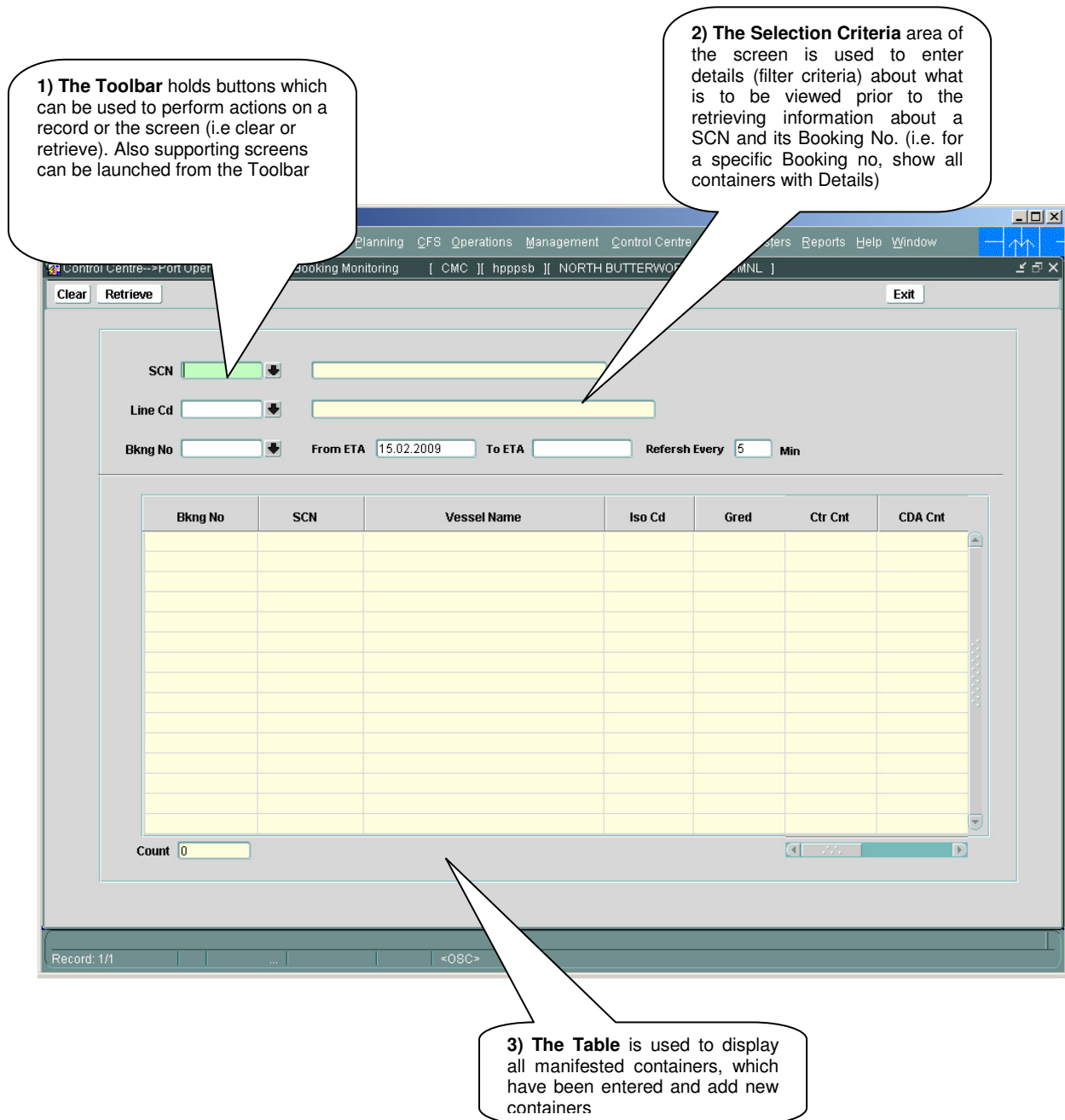


## 4.5 Overview of CADO Booking Monitoring screen

### 4.5.1 Main Screen – Main Areas

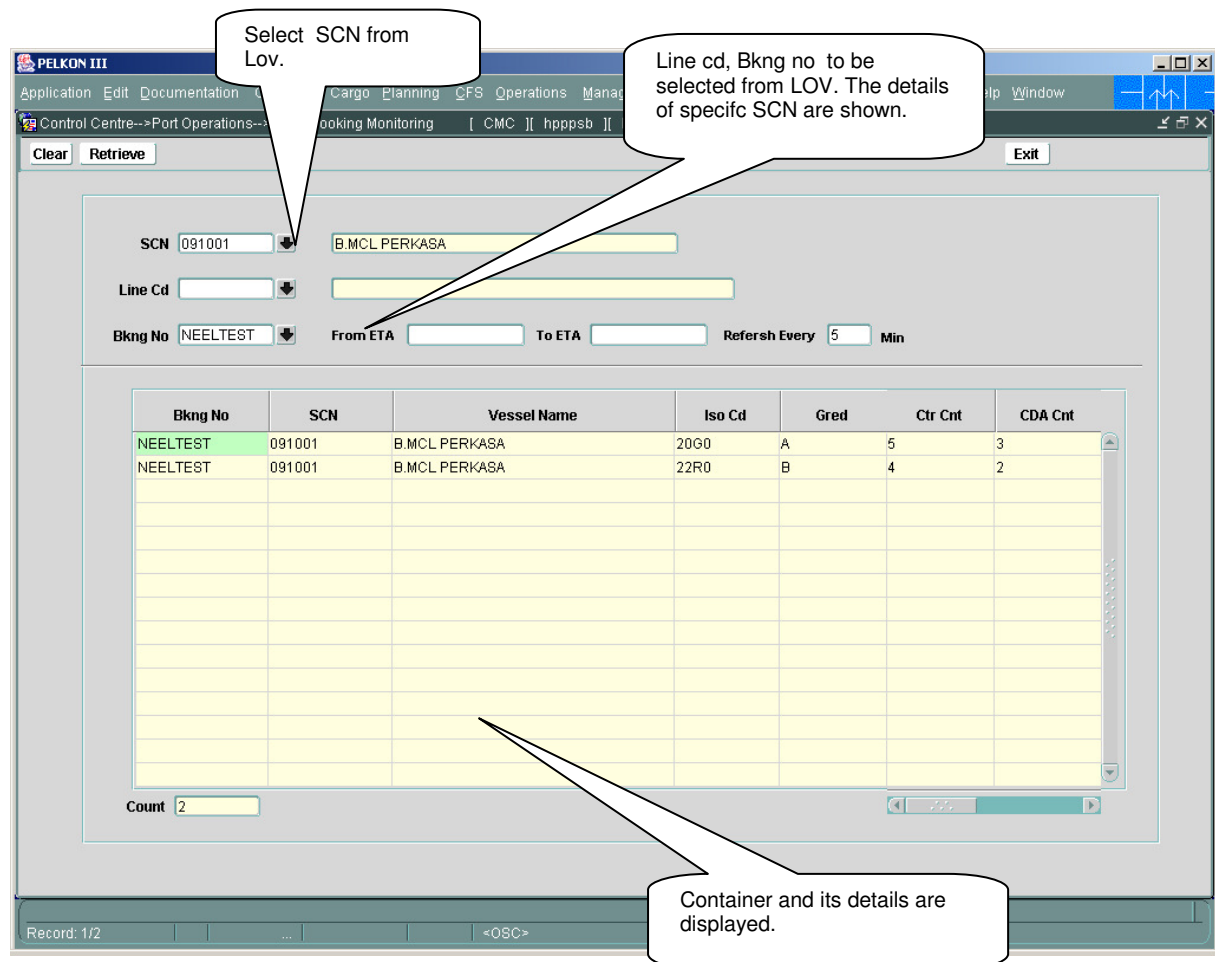
On selecting CADO Booking Monitoring from the menu, the user is presented with the screen below. The main screen can be broken down into three areas:

- 4) Toolbar
- 5) Selection Criteria
- 6) Table



#### 4.5.2 Main Screen – Detailed Description

On selecting CADO Booking Monitoring from the menu and retrieving details for a Booking no, the user is presented with a screen similar to the one below:



#### 4.6 CADO Booking Monitoring – Steps

#### 4.6.1 CADO Booking Monitoring

1. Enter the SCN for which user wants to monitor the operations happened.
2. The Line cd's which are for the specific SCN are shown in the Line cd LOV.
3. Enter the Booking no in “**BKNG No**” in the. If the user knows else select from LOV.

After the Booking nos are displayed in the details part then double click on a specific Booking no to view the details.

## 4.7 Description of Fields

The following are the description of each field on each screen or area of screen. The fields that have been marked with Shaded box are mandatory fields that must be populated for the user to proceed.

### 4.7.1 Main Screen: Selection Criteria Area:

- 

User to enter SCN or has to select one from the drop down list.

- **Vessel Name**

When user selects SCN no, the system displays the vessel name associated with the SCN in this field. It is a display only field.

- **Booking no**

User to enter Booking no or has to select one from the drop down list.

- **From ETA**

'From ETA' represents the Expected Time of Arrival of the SCN through which filtration of containers is done .

- **To ETA**

'To ETA' represents the Expected Time of Arrival of the SCN through which filtration of containers is done.

### Detail table:-

Details table provides Booking no, SCN no, Vessel name, ISO code., etc for the query parameters entered.